

m o o o i[®]



The Golden Chair

The Golden Chair, designed by Nika Zupanc for Moooi, is available in a Glossy Golden, Matt Golden and Black on Black composition. It's elegant, retro-looking base can also be dressed in a selection of fabrics to match different interiors.

Designer	Nika Zupanc
Year of design	2013
Material	Gold chromed steel frame, Gold synthetic leather

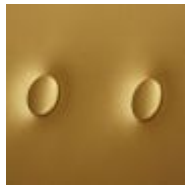
colours

Please note that there is a matt version available that has a higher martindale of 40.000, which is an advantage when using the chair in larger projects.



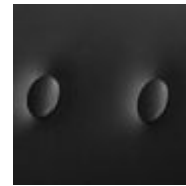
Gold

100% skai[®] leather
20.000 martindale
(not available in the UK)



Matt gold | for project use

100% skai[®] leather
>200.000 martindale
BS 5852 source 0&1



Black

100% skai[®] leather
>50.000 Martindale
EN1021-1/2
BS5852 part I
DIN 4102-B2
NF M2

Macchedil, Grezzo

composition

47% co, 20% vi, 18% pi, 8% li, 5% pc, 2% af

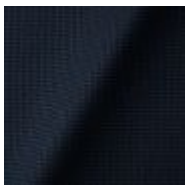
abrasion

18.000 martindale

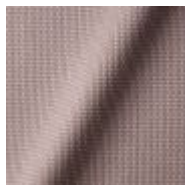
lightfastness 4

firetest

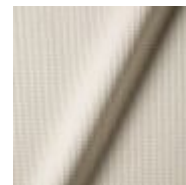
EN1021 I&2



Macchedil Grezzo
Black indigo

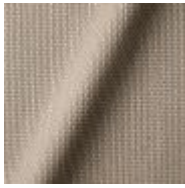


Macchedil Grezzo
Pinkish



Macchedil Grezzo
Off white

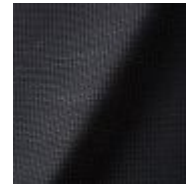
m o o o i[®]



Macchedil Grezzo
Light brown



Macchedil Grezzo
Grey grey



Macchedil Grezzo
Anthracite



Macchedil Grezzo
Cappuccino



Macchedil Grezzo
Deepblue

Macchedil, Sottile

composition

49% vi, 24% pl, 21% li, 6% co

abrasion

30.000 martindale

lightfastness 4

firetest

EN1021 I&2



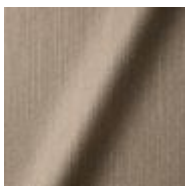
Macchedil Sottile
Black indigo



Macchedil Sottile
Pinkish



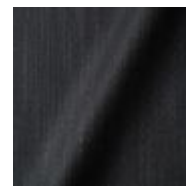
Macchedil Sottile
Off white



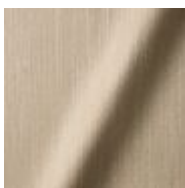
Macchedil Sottile
Light brown



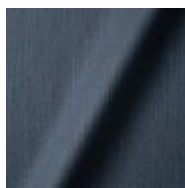
Macchedil Sottile
Grey grey



Macchedil Sottile
Anthracite



Macchedil Sottile
Cappuccino



Macchedil Sottile
Deep blue

m o o o i[®]

Abbracci

composition

100% pl

abrasion

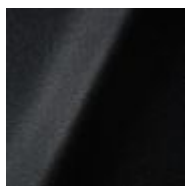
50.000 martindale

lightfastness 4

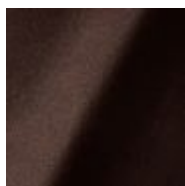
firetest

FR BS5852 0/1

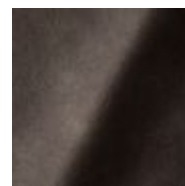
EN1021 I&2



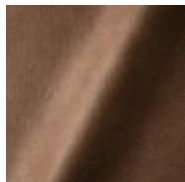
Abbracci
Black



Abbracci
Brown



Abbracci
Grey



Abbracci
Taupe

Oray

composition

8% co, 38% vi, 15% pl, 39% li

abrasion

30.000 martindale

lightfastness 4

firetest

FR BS5852 0/1

EN 1021 I&2

m o o o i[®]



Oray
Cream



Oray
Sand



Oray
Rock



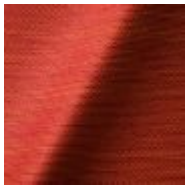
Oray
Gravel



Oray
Dark Gull



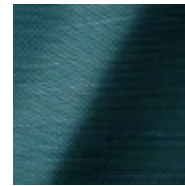
Oray
Copper



Oray
Flamboyant



Oray
Oil



Oray
Aqua



Oray
Ocean



Oray
Metal



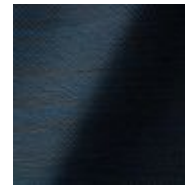
Oray
Griffin



Oray
Chestnut



Oray
Dark



Oray
Indigo

Jacquard andaz

composition:

34% cotton - 30% viscose - 24% linen - 12% polyamide

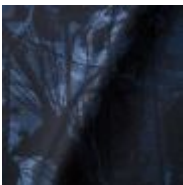
abrasion:

25000 martindale

lightfastness 4-5

firetest:

BS EN 1021 I&2



Jacquard
Andaz

Jaquard Fresco

composition

40% vi ,36% co,14% pl, 10% li

abrasion

20.000> martindale

lightfastness 4-5

firetest

EN1021 I&2



Jaquard
Fresco

m o o o i[®]

Jacquard Old Black & Blue

composition

52% vi, 38% co, 10% li

abrasion

20.000> martindale

lightfastness 4-5

firetest

EN1021 I&2



Jacquard
Old Blue



Jacquard
Old Black

Justo

composition

15% CO, 35% PC, 10% PL, 40% VI

abrasion

50.000 Martindale rubs, EN ISO 12947

lightfastness

Note 5, EN ISO 105-B02

fire test

EN 1021-1/2

US. Cal. Bull. 117-2013

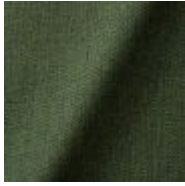
NFPA 260

Upon request, with treatment:

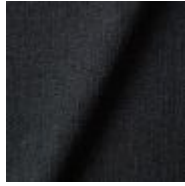
BS5852 part1

BS5852 crib5

m o o o i®



Justo
Alge



Justo
Bazalt



Justo
Bred



Justo
Hinde



Justo
Lyse



Justo
Muse



Justo
Sennep



Justo
Sten

Liscio

composition

35% WO / 35% CV / 21% CO / 9% PA

abrasion

30.000 Martindale

lightfastness

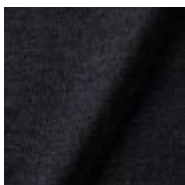
4-6

firetest

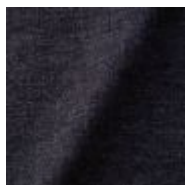
US. Cal. Bull. 117-2013

Upon request, with treatment:

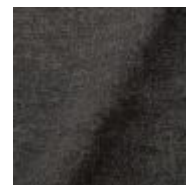
BS5852 part I



Liscio
Grigio Blu Scuro



Liscio
Grigio Blu



Liscio
Grigio Scuro

m o o o i[®]



Liscio
Muscio



Liscio
Argento



Liscio
Nebbia



Liscio
Perla



Liscio
Latte Scuro



Liscio
Latte

Twill

composition

72% wo, 8% pa, 20% pl

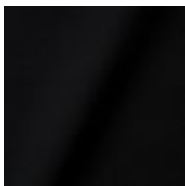
abrasion

75.000 martindale

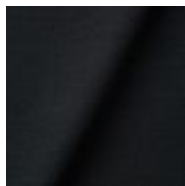
lightfastness 5

firetest

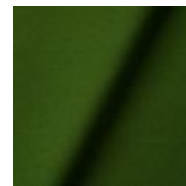
EN1021 I&2



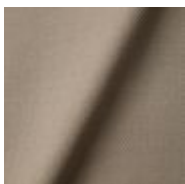
Twill
Caviar



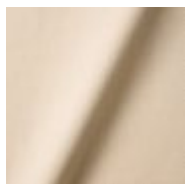
Twill
Graphite



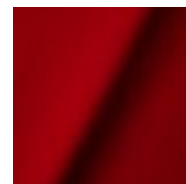
Twill
Grass



Twill
Linen



Twill
Natural



Twill
Passion

m o o o i[®]

Twill Melange

composition

60% WO / 20% PES / 20% PA

abrasion

80.000 martindale

lightfastness 6-7

firetest

EN1021-1/2

US. Cal. Bull. 117-2013

BS5852 part1

DIN 4102-B2



Twill Melange
Chili



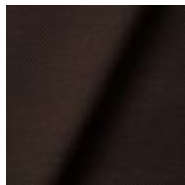
Twill Melange
Dust



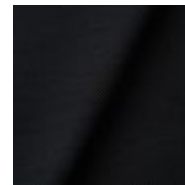
Twill Melange
Flour



Twill Melange
Lavender



Twill Melange
Peat



Twill Melange
Slate

m o o o i[®]

Trickle

composition

60% WO / 20% PES / 20% PA

abrasion

80.000 martindale

lightfastness 6

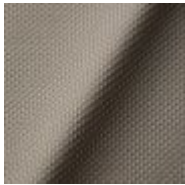
firetest

EN1021-1/2

US. Cal. Bull. 117-2013

BS5852 part1

DIN 4102-B2



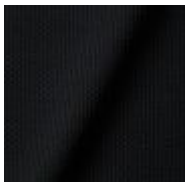
Trickle
Flour



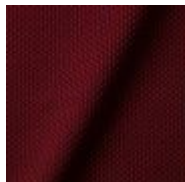
Trickle
Twig



Trickle
Peat



Trickle
Slate



Trickle
Chili



Trickle
Lavender

m o o o i[®]

Velour

composition

77% wo, 8% pa, 15% pl

abrasion

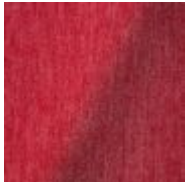
100.000 martindale

lightfastness 7

firetest

FR BS5852 0/1

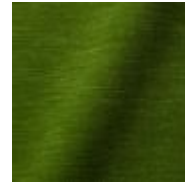
EN1021 I&2



Velour
Coral



Velour
Stone



Velour
Moss

Kvadrat Fabrics

Kvadrat Fabrics

Selected Moooi products can be upholstered with a collection of Kvadrat fabrics. Kvadrat designs high-quality upholstery, in an extensive range of colours and textures.

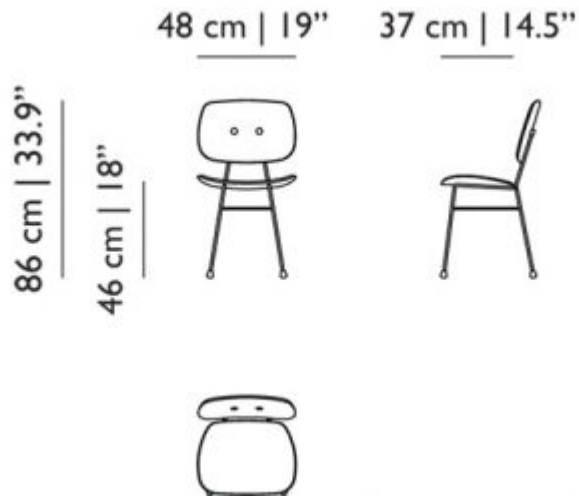
Go to our Kvadrat fabrics page for a full overview of all fabric families you can choose from.



Image not found or type unknown

m o o o i[®]

dimensions



cleaning instructions

Moooi recommends using a good furniture polish and a soft cloth. Apply generously in layers to the surface and use the cloth to shine. Do not use abrasive fabrics, gently remove tough stains with warm water and a trusted multi-surface cleaner.

packaging

H 51 cm | 20,1"

W 49 cm | 19,3"

D 90 cm | 35,4"

Colli 1/1

Product weight:

9 KG | 19,8 lb

With packaging:

10,5 KG | 23,1 lb

Bearded leopard Jacquard

composition

77% VI / 15% PES / 7% CO / 1% PA

abrasion

15.000 Martindale rubs, EN ISO 12947

lightfastness

Note 4-6, EN ISO 105-B02

firetest

EN1021-1/2

Upon request and with treatment:

BS5852 part I



Blushing Sloth Woolly Mohair

composition

85% WV / 15% WM

abrasion

15.000 Martindale rubs, EN ISO 12947

lightfastness

Note 4-6, EN ISO 105-B02

firetest

EN1021-1/2

BS5852 part I

m o o o i[®]



Extinct Animals

Fabric Collection

Blushing Sloth Woolly
Mohair

Calligraphy Bird Jacquard

composition

64% VI, 21% PES, 15% CO

abrasion

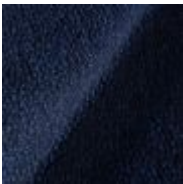
50.000 Martindale rubs, EN ISO 12947

lightfastness

Note 4-6, EN ISO 105-B02

firetest

Upon request, with treatment;
BS5852 part I



Extinct Animals Fabric

Collection

Calligraphy Bird

Jacquard

m o o o i[®]

The Menagerie of Extinct Animals

composition

100% PES

abrasion

50.000 Martindale rubs, EN ISO 12947

lightfastness

Note 4-6, EN ISO 105-B02

firetest

EN1021-1/2

Upon request, with treatment;

BS5852 part I



Flying Coral Fish Scaled



Extinct Animals

Fabric Collection

Flying Coral Fish Scaled

Type

Pure aniline, nubuck

finish

m o o o i[®]

Dwarf Rhino Buffed

composition

100% steer

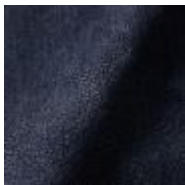
Type

Pure aniline, nubuck finish



Extinct Animals Fabric
Collection
Dwarf Rhino Buffed

Dwarf Rhino Crackle



**Extinct Animals
Fabric Collection**
Dwarf Rhino Crackle

Armoured Boar Crackle

composition

100% cow hide

Type of leather

Pure aniline, nubuck finish

m o o o i[®]



Armoured Boar Hairy

composition

100% cow skin

lightfastness

>3, ISO 105-B02:2004

