

PLUS

Francesco Rota | 2017



PLUS

Francesco Rota | 2017

Why choose just one chair when you can have a whole modular system, which changes with your needs? From a more classic sofa for the home to various island layouts for lounge spaces, the PLUS collection, featuring soft shapes and maximum modularity, is a solution based on comfort and simple elegance. It can also be enhanced with SCREEN partitions, which can provide a real backrest, and with OORT cushions.



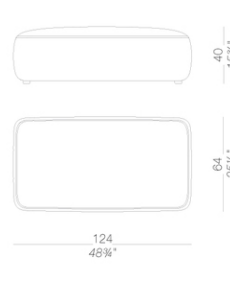
Side table



Armrest



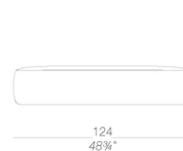
Lounge seats



Lounge backrests



Movable backrest



PLUS

Francesco Rota | 2017

Modular seating in fire-retardant injected foam with removable fabric. Seats, backrests and armrest, also with hpl or wooden top, can be linked with brackets. PLUS can be matched with SCREEN partitions and OORT cushions.

TEST EN 1728:2012 AC:2013 6.17 - EN 16139:2013 - L2 extreme

PLUS

Francesco Rota | 2017

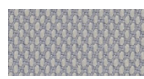
upholstery



fabric
Hallingdal 65
47 Colors



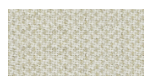
fabric
Canvas 2
40 Colors



fabric
Steelcut Trio 3
48 Colors



fabric
Remix 2
24 Colors



fabric
Clara 2
24 Colors



fabric
Divina MD
24 Colors



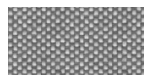
fabric
Divina Melange 2
24 Colors



fabric
Medley
37 Colors



fabric
Swing
24 Colors



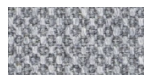
fabric
Maya
1 Colors



fabric
Jet
1 Colors



fabric
Laser J Flash
1 Colors



fabric
Fiord
24 Colors



fabric
Tonica 2
39 Colors



soft-leather
soft-leather
7 Colors



ecoleather
GRIMM FR
24 Colors

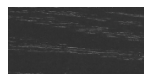
top



HPL 10 mm
HPL fenix
2 Colors



wood
blached oak
1 Colors



wood
black open pore
1 Colors

linking bracket



powder coating
black
1 Colors

consult the porfolio for the range of colors, fabrics, eco-leather, soft-leather.

use and maintenance instructions

Clean all parts in wood, leather, fabric and metal with a damp cloth or a diluted neutral cleaner. Do not use cleaners with alcohol, bleach, solvent or abrasive products. Any liquid spilt on the product must be wiped up immediately. When lifting or moving the product, hold it on the structure and not under the seat. The product should not be subjected to unbalanced weights, as it is designed for a proper rest on the foothold (on four legs or on the base). Our company relieves from any responsibility in case of damage caused to fragile floors. Avoid any improper use of the product: do not step on the product, on the footrest or on the armrests. Avoid any movements that could compromise the proper functionality of the product or the safety of the users. Wood and leather, being natural materials, could be easily damaged. Small impurities or imperfections are within quality standard range. Do not expose the product to weather conditions or atmospheric agents, nor to heat sources over 40°C. Also products for outdoor use could be afflicted by atmospheric agents. The product could undergo possible exterior changes due to particular exposure to heat, humidity and saltiness. An appropriate and frequent maintenance and cleaning of the product enhances its durability. The product could change colour and shade, if exposed to direct sunlight. Maintenance has to be carried out by experienced staff. Dispose of the package only after assembling the product, in order to avoid the loss of ironmongery and components. Once the product has been dismantled, the product itself or its components must be given to the public garbage disposal system, according to the legislation in force.